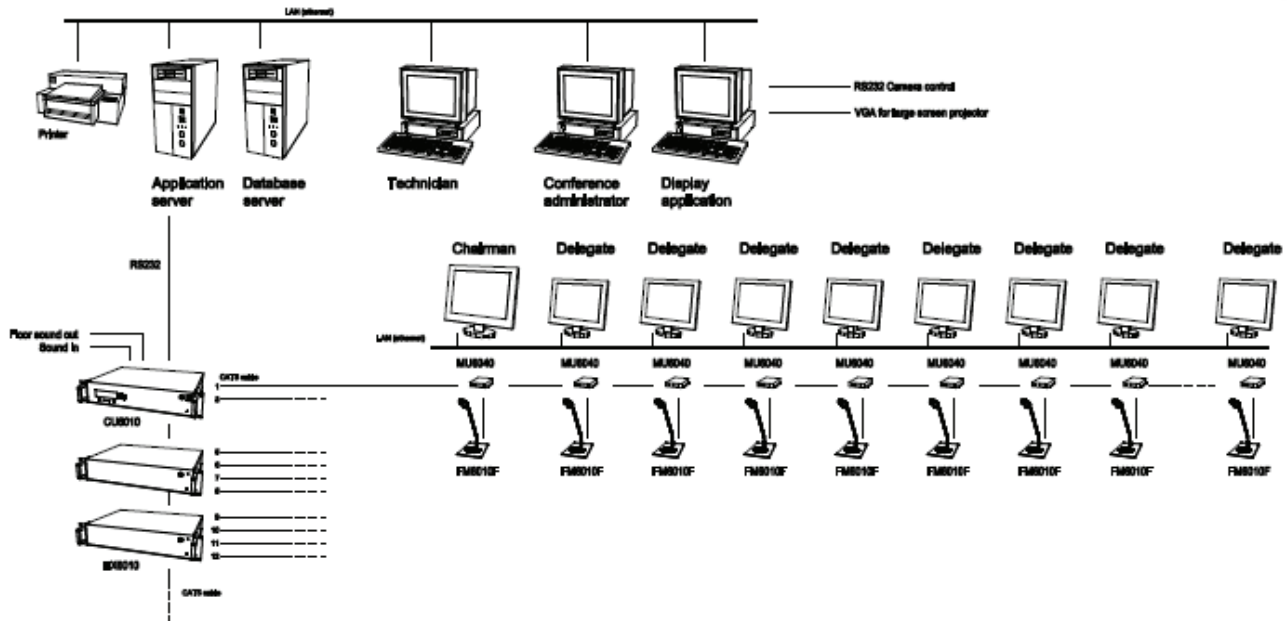


# City Council Application with Mini PC's

## Description

In many city councils and committee rooms participants already have a desktop or laptop computer. The SW 6000 software suite offers a very elegant and cost-effective way to integrate the conference system control and voting with the personal computer infrastructure. This software allows for a seamless migration towards the DCS 6000 system in such rooms, with minimal investments in new hardware and no need for the delegates to change computers.



## Bill of Materials

The following elements are needed for a typical city council;

### Audio for delegates

Each delegate position is equipped with a flush-mount microphone panel with microphone control button. Each panel is connected to a MU 6040D module mounted under the table. The MU 6040D modules are daisy chained with standard FTP or STP cat-5e cable onto the CU 6005 controller. There is one audience response microphone also tied-in with the system.

Quantity	Type	Description
# of delegate	MU 6040 D	DCS 6000 Single Delegate Microphone Unit for Flush Panels
# of delegates	FD 4010	Delegate Flush Panel w/Fixed Mic 14.2 in. (36 cm)
# of deleg. - 1	EC 6000-xx	DCS 6000 CAT-5e STP Cable Assembly xxm
1	EC 6000-30	DCS 6000 CAT-5e STP Cable Assembly 98.4 ft. (30 m)
1	MU 6040 C	DCS 6000 Chairman Microphone Unit for Flush Panels
1	FC 4010	Chairman Flush Panel w/Fixed Mic 14.2 in. (36 cm)
1	MU 6040 D	DCS 6000 Single Delegate Microphone Unit for Flush Panels
1	HM 4042	Handheld Microphone
1	EC 6000-30	DCS 6000 CAT-5e STP Cable Assembly 98.4 ft. (30 m)
1	EC 4006-05	Cable for Handheld Microphone 16.4 ft. (5 m)

# City Council Application with Mini PC's



## Head-end and control Software

The CU 6005 runs the DCS 6000. The appropriate software licenses have to be loaded on the controller

Quantity	Type	Description
1	CU 6005	DCS 6000 Medium Power Central Control Unit
1	FL 6000-4A	DCS 6000 Feature License Voting for 50 Conference Units
1	EC 6232-xx	DIS D-sub DB9 RS232 Cable
1		Desktop server PC with keyboard & mouse
2		Monitors for desktop server PC
1	SW 6000	DCS 6000 Conference Management Software Startup Package for 1 System
1	SW 6008	DCS 6000 Conference User Application Software
1	SW 6010	DCS 6000 Microphone Control Software
1	SW 6012	DCS 6000 Agenda Handling Software
1	SW 6018	DCS 6000 Mimic/Synoptic Software
1	SW 6020	DCS 6000 Delegate Database Software
1	SW 6060	DCS 6000 Parliamentary Voting Control Software
1	SW 6090	DCS 6000 Conference Display Application Software
1	SW 6901	DCS 6000 SQL Server 2000 CPU License
1	SW 6910	DCS 6000 SQL Server 2000 Server License

## Delegate Computer Stations

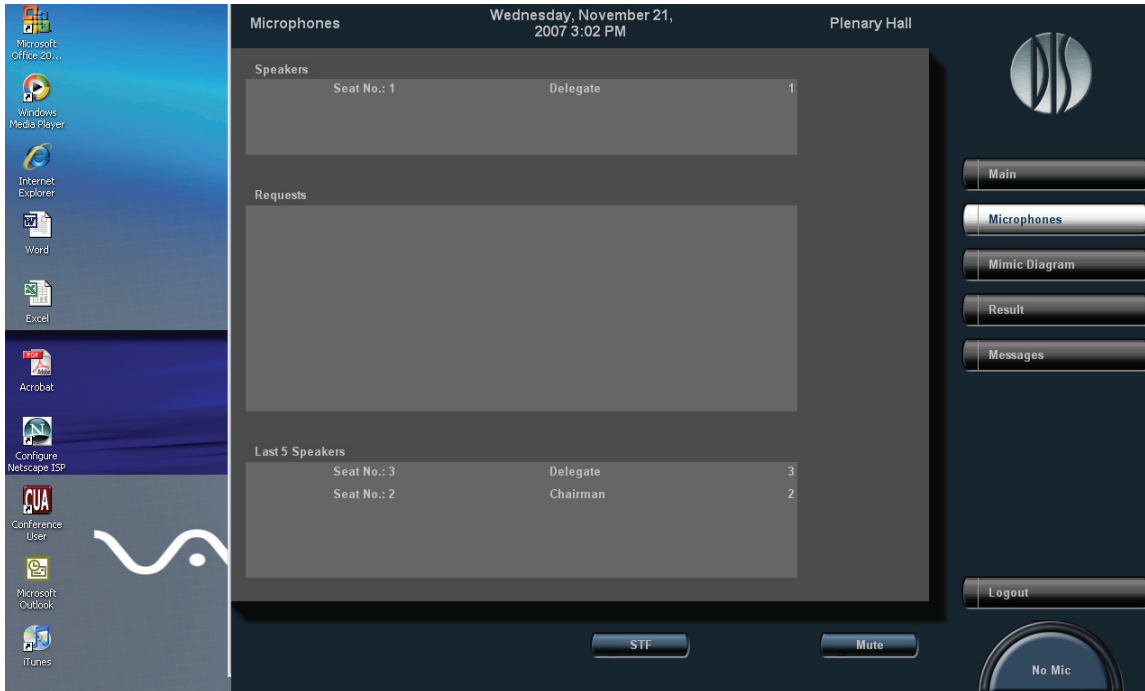
Either by using the existing computer infrastructure or with the PC 6000 each delegate position is equipped with a computer. This computer will run the DCS 6000 user application and also can run third party applications such as an internet browser, city council database, email client, etc.

Quantity	Type	Description
# of delegates	PC 6011 (or existing PCs)	One PC per delegate
# of delegates		Keyboard & Mouse
# of delegates		Monitor
# of delegates	SW 6008	DCS 6000 Conference User Application Software
# of delegates	SW 6062	DCS 6000 Parliamentary Voting Client Software
# of delegates	SW 6911	DCS 6000 SQL Server 2000 Client License
1	LAN	To interconnect delegate computers with the server

**Note: With regards to the Delegate PC the monitor size is an important consideration. If it is required that delegates can switch back and forth between applications, a wide screen monitor is advised as the CUA application doesn't fill the whole screen. If the CUA is the only application required, a monitor with 1024x768 resolution is advised.**

# City Council Application with Mini PC's

[Example of wide screen monitor with CUA application]



## Setting Up the Delegate PC's

The following steps are required per delegate PC.

1. Connect the next client PC to the server PC according to the "DCS 6000 Multi PC setup" tech note
2. Start the CUA application once on the client PC
3. Open the CAA application on the server PC and select Setup, Equipment > Conference Units
4. Identify the microphone station and computer associated with a specific delegate,

CAA Conference Administrator - Plenary Hall - [Conference Units]

CAA Conference Delegate Messages Reports Setup Window Help Exit

English

Units in room

	Room	Seat #	Serial #	Seat Type	Use Serial #	User Type	Computer Name	Mic	LS	Runtim	Comments	Mic
▶	1	1	010.051.174	DM		Delegate		0	0	<input checked="" type="checkbox"/>	Created 11/20/2007	
	1	2	000.168.204	CM		Chairman		0	0	<input checked="" type="checkbox"/>	Created 11/20/2007	
	1	3	010.007.144	DM		Delegate		0	0	<input checked="" type="checkbox"/>	Created 11/20/2007	
	1	5	000.000.000	PC		Delegate	3E99EFD7B084F8	0	0	<input type="checkbox"/>	Created by CUA 11/	
	1	6	000.000.000	PC		Delegate	Computer Name	0	0	<input type="checkbox"/>	Created by CUA 11/	

for instance in this case seat #1 and seat #6. Note that the CAA assigned the next available seat number to the client CUA upon activation. Now both the delegate unit and PC have to be assigned to the same seat.

5. Close the CUA on the client station
6. Delete the row that is associated with the client PC CUA from the conference unit overview in the CAA
7. Enter the Computer name on in the computer name field of the row with seat number 1. This way both the CUA on the client PC and the delegate unit will be seen as belonging to one delegate by the system
8. When you start the CUA on the client PC, it will be associated with seat #1. If you press the "MIC" button in the lower right hand corner the actual delegate unit's microphone will actually switch on and off. When a round of voting is initiated automatically the voting screen will pop-up
9. Repeat step 1 through 7 for each Alderman in the city council