

ListenPoint Interface with ClearOne Interact AT Application Note

Don't miss a single sound.



Description

This document describes how to connect a ListenPoint LPT-C6 Control Unit to a ClearOne Interact AT unit via line inputs and outputs. The procedures listed here are to be used as a starting point with minor level and setup adjustments to be made as necessary in both ListenPoint and ClearOne Interact software for more advanced features.

Note: Interfacing to the ClearOne Interact AT unit with ListenPoint requires an additional accessory, the ClearOne MIC EX. This is required for the audio connection from ListenPoint.

Connecting the Line Inputs/Outputs

1. Connect the line output from the ListenPoint Control Unit (Euro connector) to the line input of the ClearOne MIC EX accessory (XLR).
 - a. On the ListenPoint Control Unit, this should be connected to Teleconference output.
 - b. On the ClearOne MIC EX accessory, this should be connected to the mic input 1.
 - i. Connections labeled (A) shown below:

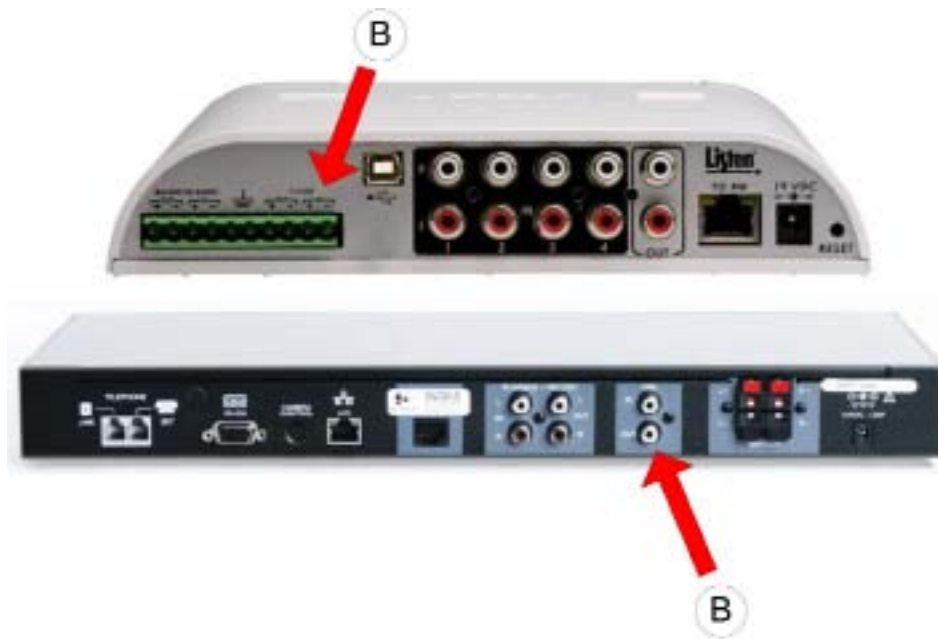


ListenPoint Interface with ClearOne Interact AT Application Note

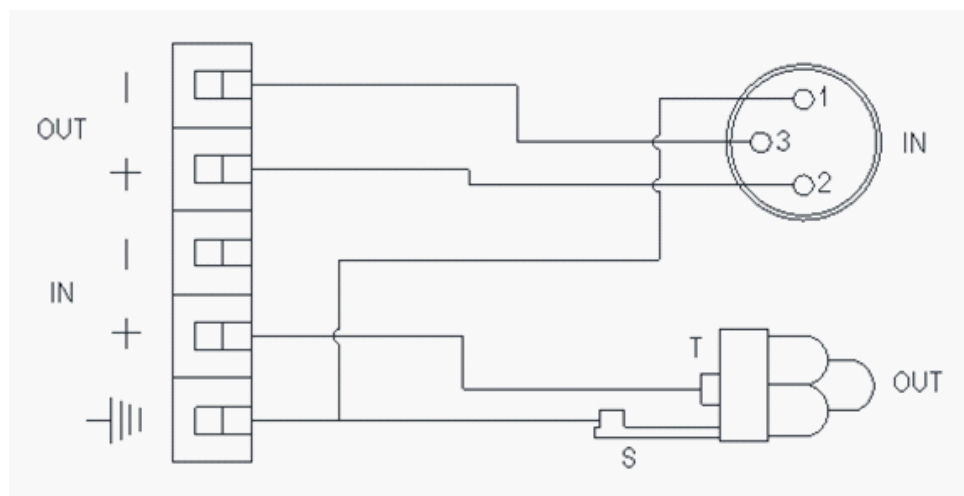
Don't miss a single sound.

Listen[®]
www.listentech.com

2. Connect the line output from the ClearOne AT unit (Unbalanced RCA) to the line input of the ListenPoint Control Unit (Euro connector).
 - a. On the ListenPoint Control Unit, this should be connected to Teleconference input.
 - b. On the ClearOne AT unit, this should be connected to the line output.
 - i. Connections labeled (B) shown below:



3. Wire diagram shown below:



ListenPoint Interface with ClearOne Interact AT Application Note

Don't miss a single sound.



4. Connect a standard analog line to the Telephone Line connector (C) on the back of the ClearOne AT unit.
 - a. Connection labeled (C) shown below:



Configuring the ListenPoint Control Unit using the front display

1. Press the power button to turn the CU on.
2. On the status window, scroll to and push to select "Aux Select".



3. On the aux select window, scroll to and push to select "Teleconference".



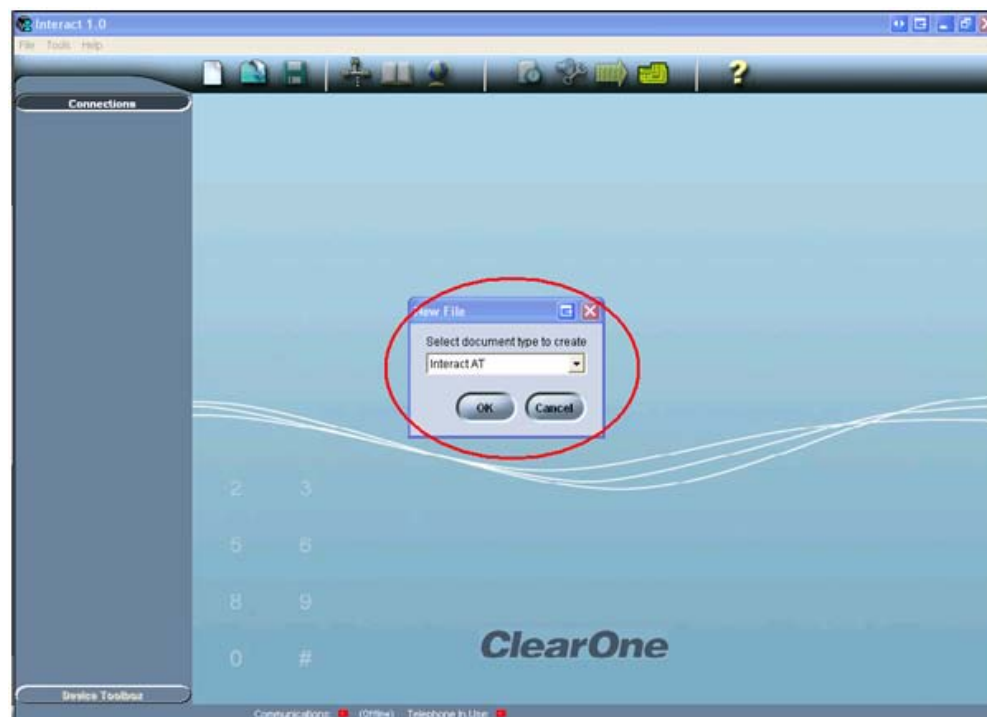
ListenPoint Interface with ClearOne Interact AT Application Note

4. The teleconference input is set to 0 dB which is a nominal listening level. Adjust the input if needed to increase or decrease the level coming from the ClearOne AT unit.



Configuring the ClearOne unit using Interact software

1. Install and configure the ClearOne Interact software according to the software installation instructions.
2. Connect your computer to the ClearOne using a straight through RS232 serial cable.
3. Open up the Interact software
 - a. Select New File
 - i. Select Interact AT



ListenPoint Interface with ClearOne Interact AT Application Note

Don't miss a single sound.



4. In drop down box below the letter "A", select Interact MIC EX

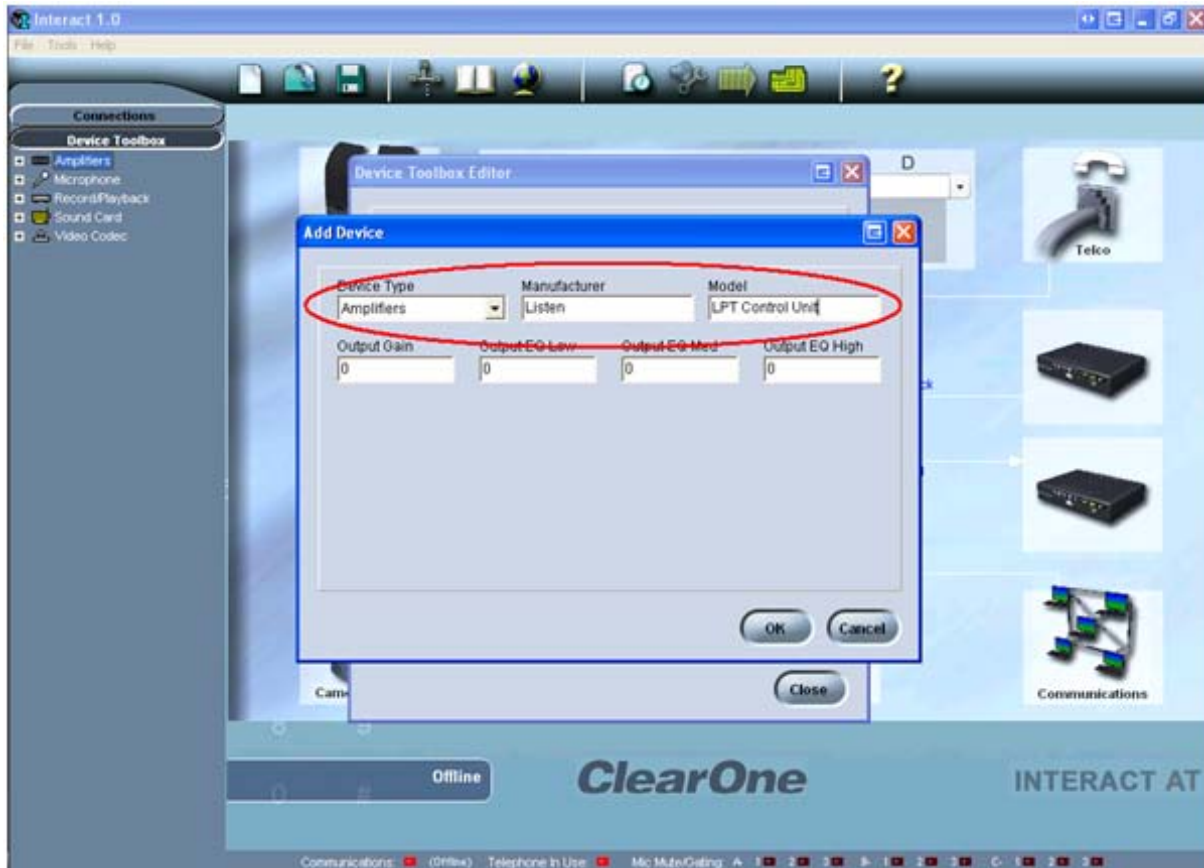


- 5. On tool bar, select Tools
 - a. Select Edit Device List
 - b. Select Add



ListenPoint Interface with ClearOne Interact AT Application Note

6. In Device Type, select Amplifiers
 - a. Type in "Listen" under Manufacturer
 - b. Type in "LPT Control Unit" under Model
 - c. Select Ok
 - d. Select Close



ListenPoint Interface with ClearOne Interact AT Application Note

7. Under Device Toolbox on the left side of screen, drop down Amplifiers.
 - a. Drag and drop Listen LPT Control Unit on to the Line Output section of the window.



8. The software is now set up to allow audio flow from each device.

This concludes interfacing the ListenPoint system to a ClearOne AT unit. Adjustments may need to be made to any of the input or output gains, based on your environment and application, but this will give you a starting point for making the connection successful.

For additional assistance with the ListenPoint system, contact Listen Technical Support at +1.800.330.0891.